

State of the District La Center School District 2/27/24



Working in service of
student learning ...
Staying in our lane.



District Strategic Improvement Plan (DSIP)

[Link to the DSIP](#)

Mission:

We will create a supportive learning environment that empowers students to reach their fullest potential. We will do this in partnership with families, the community, staff, and students to develop confident and self-reliant life-long learners who can thrive in a rapidly changing, more technologically advanced, and diverse society.

Goal for 2023-2024

All students in LCSD, regardless of circumstance or ability, will have **access** to instruction in order to develop academically and social-emotionally.



Career Ready by Grade 13!

Trades, College, Military, and Hospitality (next)... Culinary & More CTE offerings 24-25

Construction Focus

- Industry Certifications
- CTE Sequence Pathways
- 83 students in CTE Pathway

Dual Credit Options

- CTE Dual Credit
- AP Dual Credit Exams

AP (Advanced Placement)

- 22-23 = 20 AP Exams
- 23-24 = 230 AP Exams

Multiple Options for Kids!



Graduation Pathways

Multiple Pathways Available:

- CTE
- ASVAB
- College Admissions Exams (ACT/SAT)
- Dual Credit Options
- Dual Credit Exams (AP Exams)
- State-Level Assessments
- Transition Courses
- Performance Pathway

Multiple Options for Kids!

Graduation Pathways Quick Reference Class of 2024

CTE Sequence Graduation Pathway

- ✓ Complete 2.0 or more CTE credits in the same CTE program area¹ that either include a dual credit course, or lead to an industry recognized credential
- ✓ Complete a Core Plus program (Manufacturing, Construction and Maritime available)

ASVAB Graduation Pathway

- ✓ AFQT Section Score = 31 (check State Board of Education website by 9/1 annually)

Complete Math and English Language Arts (ELA) Graduation Pathway

- Can use any combination of the ELA and math options listed in this section
- ✓ College Admissions Exams (ACT/SAT)

Exam	ELA	Math
ACT	N/A	16
ACT with Writing	14	16
SAT or SAT with Essay	410	430

- ✓ Dual credit courses (1.0 credit total each for math and/or ELA)
 - AP/IB/Cambridge: Earn a C+ or higher in state approve course (each term)
 - CTE Dual Credit (must earn at least high school credit)¹
 - College in the High School or Running Start (local approval of course options)
- ✓ Dual credit exams (for applicable state-approved courses in math and/or ELA)
 - Advanced Placement = 3 or higher exam score
 - Cambridge International = E or higher exam score
 - International Baccalaureate = 4 or higher exam score
- ✓ State-level assessments (SBA and WA-AIM)
 - SBA: ELA = 2548; math = 2595
 - WA-AIM: ELA = 104; math = 103
- ✓ Transition courses (1.0 credit total for math and/or ELA course over one school year)
 - Bridge to College courses (approved by state)
 - Locally articulation agreements between districts and sponsoring colleges

For questions, email OSPI staff at graduation.pathways@k12.wa.us or maria.muto@k12.wa.us

¹ OSPI approval needed for CTE Graduation Pathways that include courses in more than one CTE Program

Industry Partners

Rotschy Inc.

Quail Homes

Tapani Plumbing Inc.

Cowlitz Tribal Foundation

City of La Center

Wolf Industries

Builders First Source

River City Enterprises

ESD 112

LC Education Foundation

LC Boosters



River City Enterprises





Greg Stutz with Builders First Source
with Jack Leedom LCHS Construction
Teacher

- Pictured with a pre-cut Shed
donated from Builders First
Source



Dozer Days
for Students
- BIA



Ridgefield Skills Center
- Doug Green

Advanced Placement (AP)

22-23

3 Courses... 20 Exams

23-24

9 Courses... 230 Exams

College Credit

More rigorous than Running Start

Multiple Pathways for Kids



Career Ready by Grade 13

College and/or Trades

Multiple opportunities for kids!



Volunteer Opportunities for Students

Goal: Increase opportunities for students to volunteer in our community building a culture around community service..

Collaborative effort between the City and the District to merge our students with volunteer opportunities in and around La Center.

- Meals on Wheels
- Lions Club
- LC Ambassadors for Events
- Support in LC Christmas Festival. (Fa La La La Center)
- Our Days
- Museum Association
- Concerts in the Park
- Farmer's Market
- and so much more...



Iceberg Analogy

Iceberg & Transparency

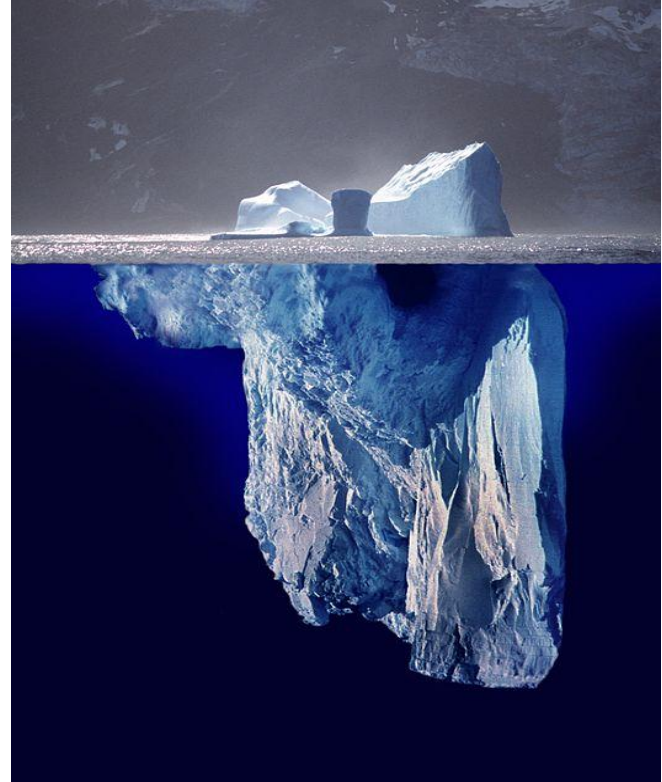
Layers within our system that represent the complexity of our work: **My goal is to highlight the entire iceberg of our school system.**

Layer 1 Visible component/action within the classroom and around the district

Layer 2 The purpose

Layer 3 The systems and structures that support use and implementation

Layer 4 This is an instructional design that shines through us and directly on students resulting in learning.



Iceberg Analogy Applied to Reading

Iceberg & Transparency

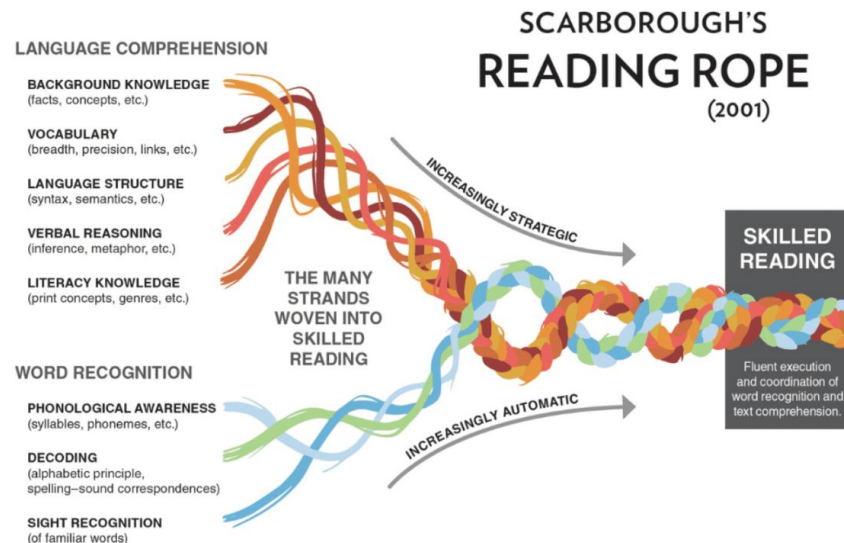
Layers within our system that represent the complexity of our work

Layer 1 Visible component - **Test Scores, kids noses in books**

Layer 2 The purpose - **Guides Instruction, Grows all readers, work toward 3rd grade and beyond, Develop lifelong readers**

Layer 3 The systems and structures that support use and implementation - **Tier 1: Core Instruction, Tier 2: Classroom Based Reading Groups, Tier 3: Individualized Instruction**

Layer 4 Instructional design - **Intentional lesson planning for instruction based on data that informs next steps**



Reading Star Growth Data (District)

Star Reading Current Student Growth Percentile (SGP)

Fall to Winter 2023-2024

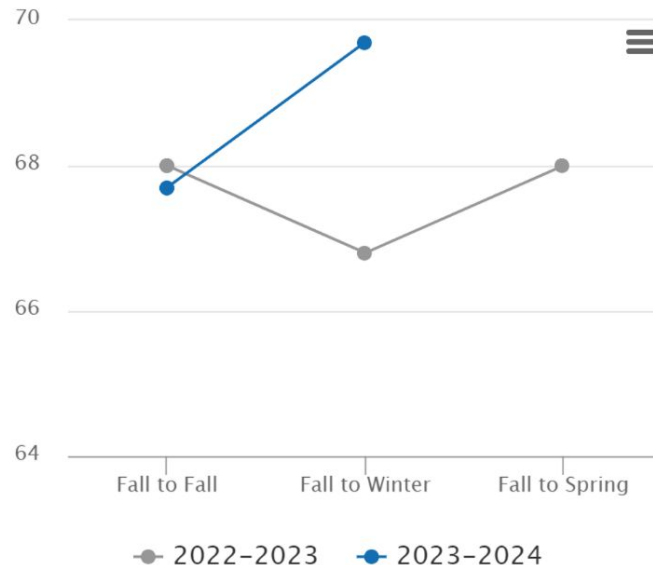
69.7%

813 of 1,166 students scored at or above typical growth (35th current SGP) from Fall to the given test period

This is up 2% from Fall to Winter 2022-2023

Star Reading Current Student Growth Percentile (SGP)

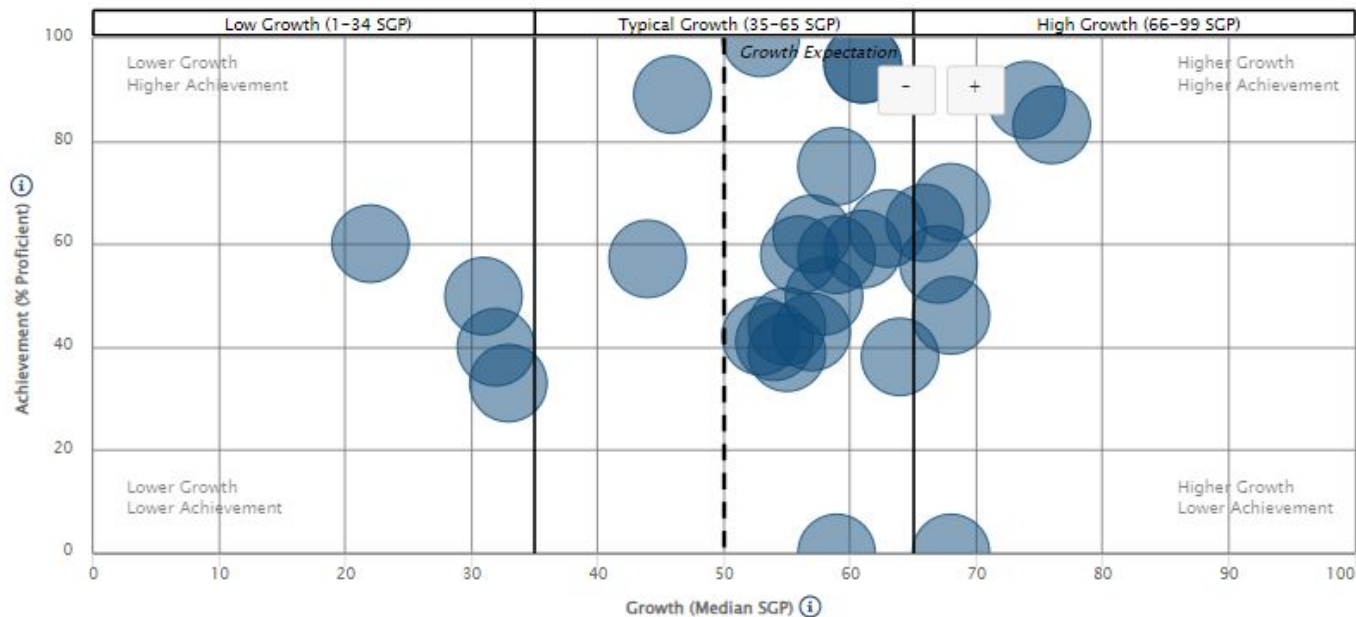
Fall to Winter 2023-2024



Reading Growth - Fall 2023 to Winter 2024

District view / School view

La Center Elementary School - 30 Classes



Mathematics

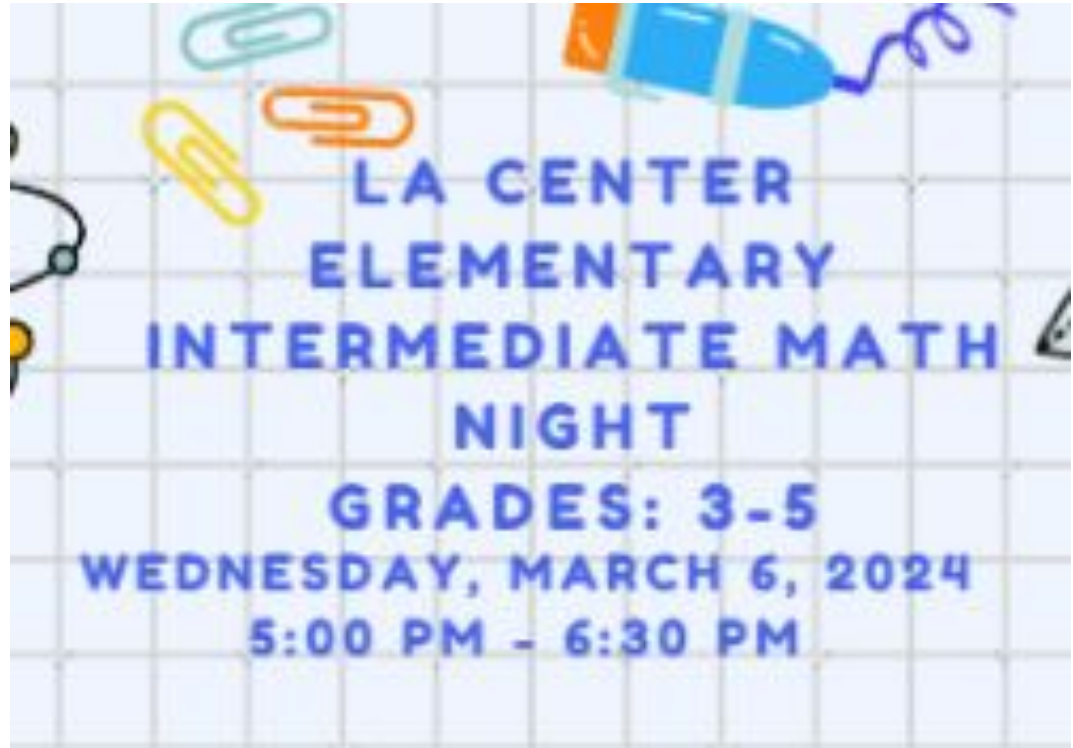
Multiple measures **for** learning

Instructional Coach

Curriculum and Instructional
Alignment

Context of Growth

Year one...



Mathematics Star Growth Data

Star Math Current Student Growth Percentile (SGP)

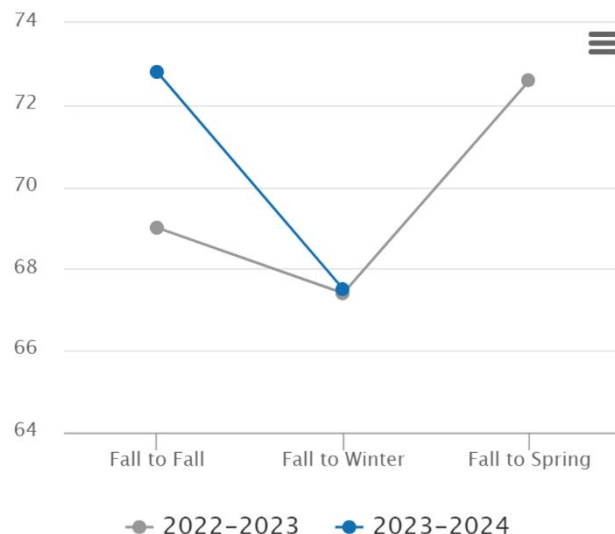
Fall to Winter 2023-2024

67.5%

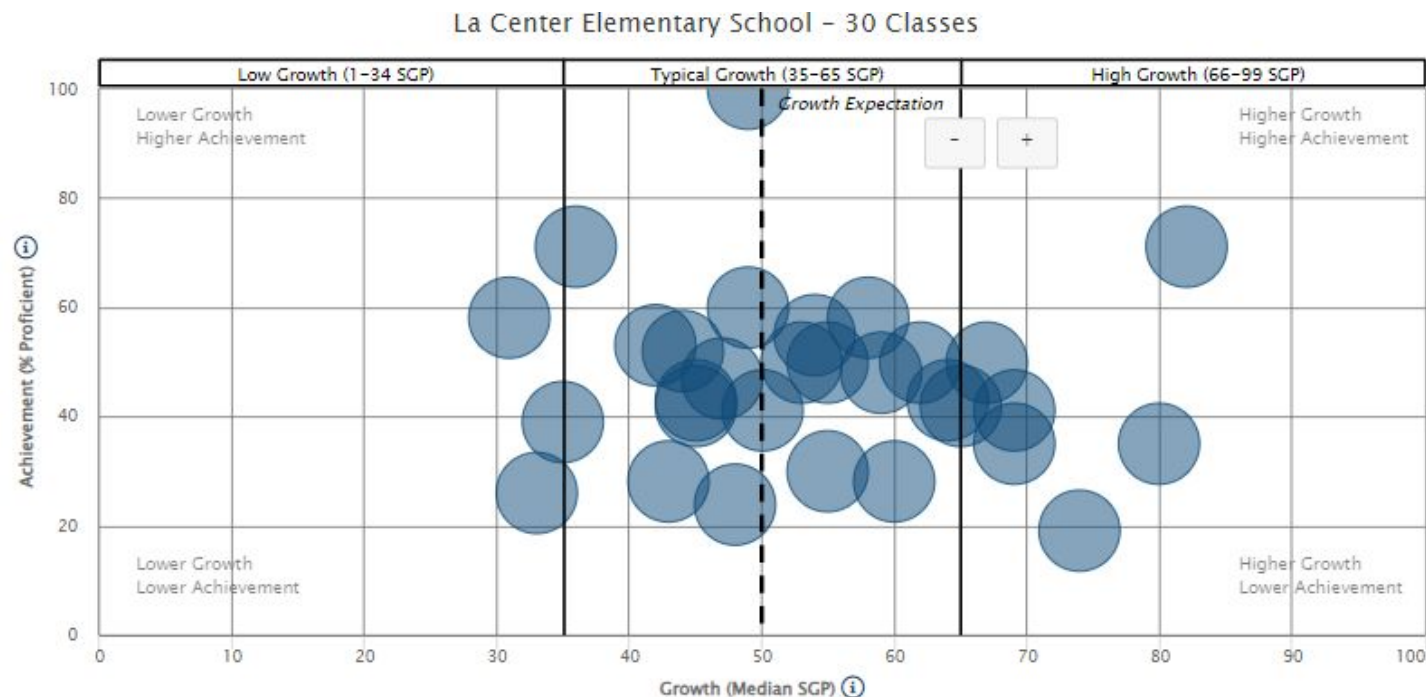
937 of 1,389 students scored at or above typical growth (35th current SGP) from Fall to the given test period

Star Math Current Student Growth Percentile (SGP)

Fall to Winter 2023-2024



Math Growth - Fall 2023 to Winter 2024



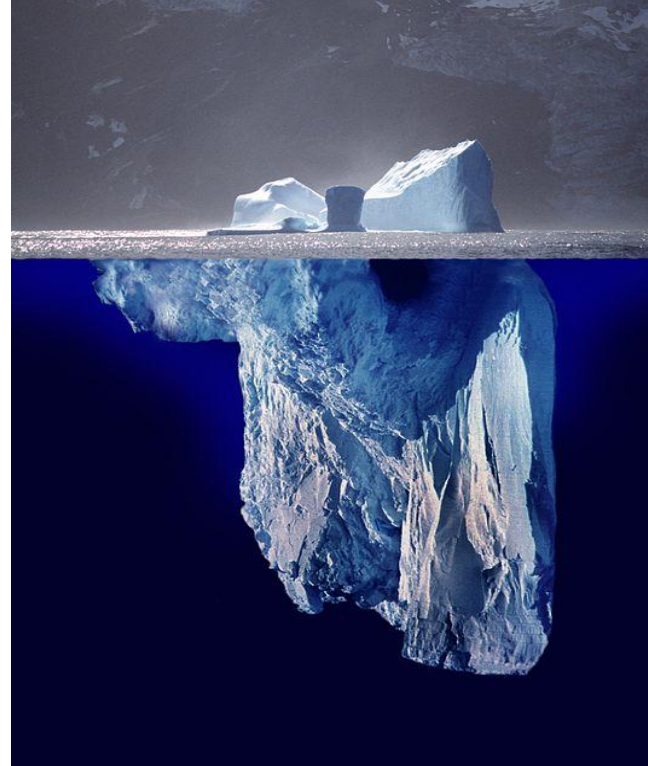
Focusing on Family and Academics Does Work

Layer 1 Visible component... **Focus on all students, policy work, test scores**

Layer 2 The purpose: **Reading, Writing, Math, Science, Soc. Studies, PE, Arts, CTE, AP (Multiple Opportunities for Kids), Family**

Layer 3 The systems and structures that support use and implementation: **Professional Development, Shared Leadership Teams, family connections, student conferences**

Layer 4 This is an instructional design that shines through us and directly on students resulting in learning: **Implementation of strategies learned in PD, continuous learning**



June 2023 - October 2023

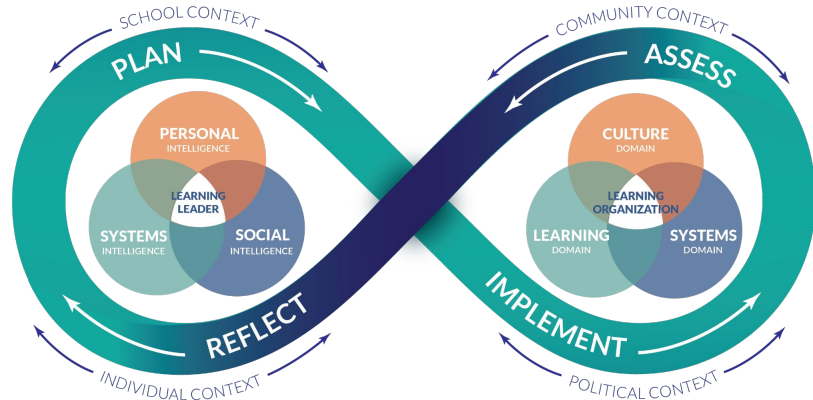
- Sheltered Instruction Observation Protocol (SIOP), focused on engagement strategies for students
- Bridges Math Instructional Strategies, focused on core instruction
 - Family Math Nights
- Math Coaching Support
- Learning Labs
- Learning Walks
- Unit Planning with teacher cohorts

Next phase in Professional Development (PD):

- Cohort Teacher Teams focused on high impact instructional strategies.
 - Fosters improved skill set for teachers and collaboration around common challenges and solutions.

Professional Development

SCHOOL LEADER PARADIGM *Becoming While Doing*



CREATING HOPE FOR ALL
#CreateHope



©2018 School Leader Collaborative

Budget - General

Lower Taxes - Levy

Asked for \$1.50/1000

Collecting \$1.32/1000

Timeline

2023 Levy Year 1 = \$1.32, \$2.6M

2024 Levy Year 2 = \$2.8M (approx)

2025 Levy Year 3 = \$3.0M (approx)

Next levy option would be Feb. 2025 to start collections in 2026

Accounts

Checking Account - \$1.8M Budgeted

- Still working on Savings Account
- Staffing, Insurance, Gas, Utilities, Health Care
- **Clean Audit!**



Safety

General Safety:

- Auto-Locks & Keys, ES
- Card Readers, ES, MS & HS
- Drills- Fire, Lockdown, earthquake, shelter in place
- Locks & gates
- AEDs w/ Narcan
- PTO Safety Meeting

Policing

- Clark County Sheriff, Commander Sample, with CCSO
- Law and Justice Council - represent schools

Still on the docket...

- Radio replacements & repeaters
- Camera upgrades Server upgrades



Communication

Web Page - Completed

Reader Boards

- ES, MS & HS

Skyward Emails to Parents

Board Meetings

Newsletters

State of the District Address

Social Media

Meals on Wheels, City Council, Farmers Market, community events...



The state of the district is:
**Strong - Focus on Multiple
Opportunities in Service of Student
Learning**

Thank you... together we make an amazing
community!



**I LOVE
LA CENTER**